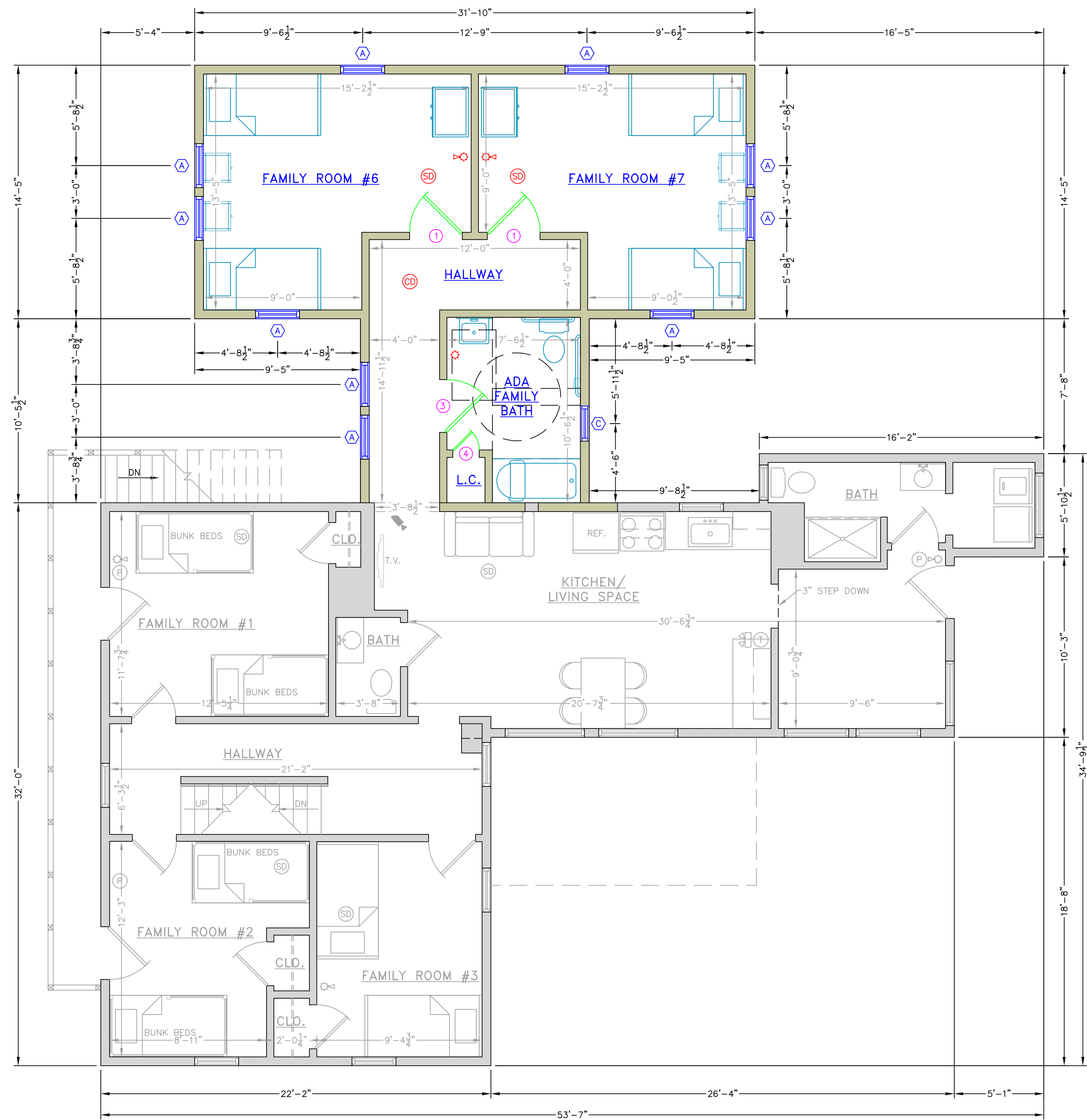
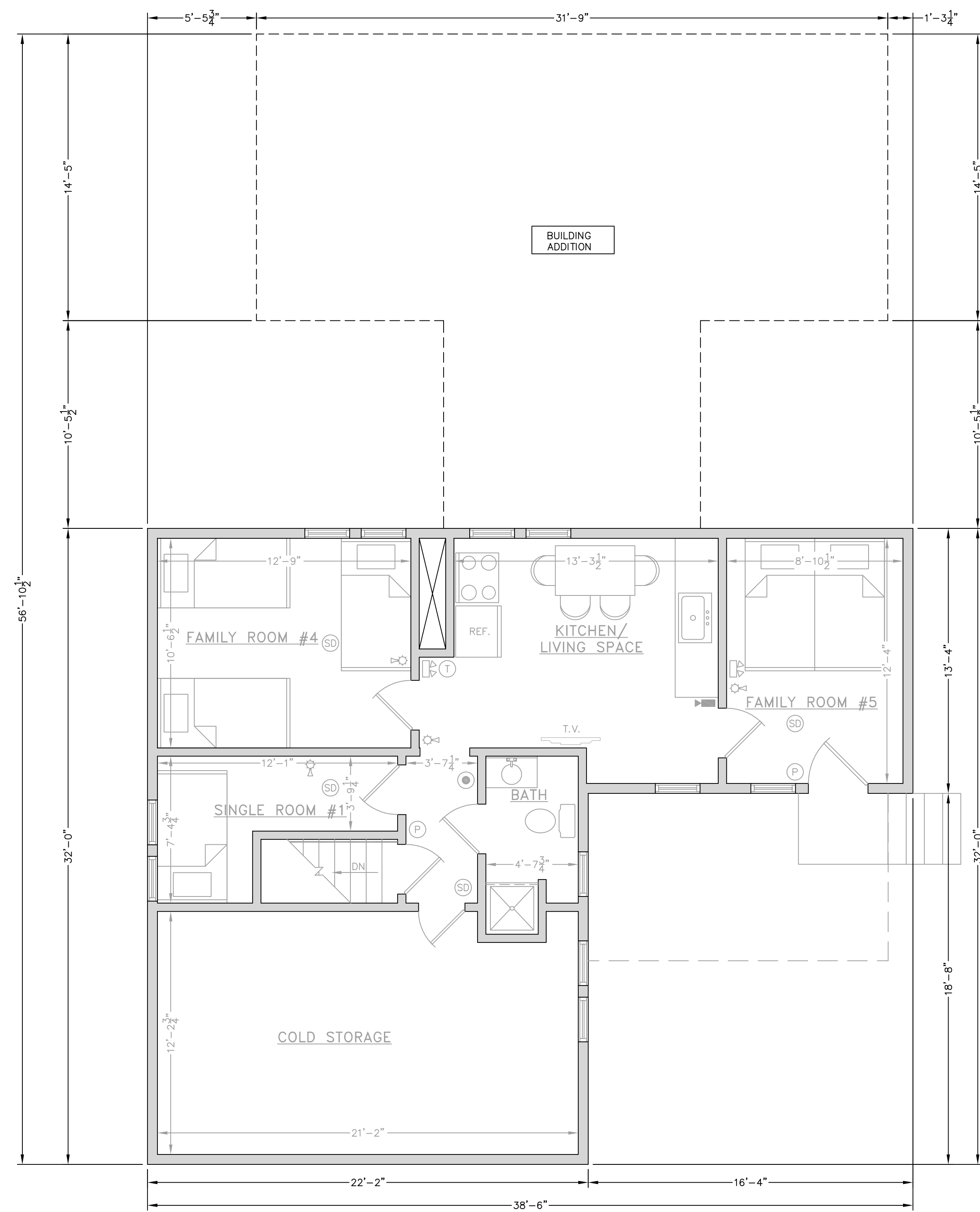


DOOR SCHEDULE					
NO.	QUANTITY	SIZE	TYPE	FRAME	REMARKS
①	2	3'-0" x 6'-8"	MASONITE SOLID CORE 6-PANEL COMPOSITE	WOOD	HINGES, LEVER HARDWARE, PRIVACY LOCKSET
③	1	3'-0" x 6'-8"	MASONITE SOLID CORE 6-PANEL COMPOSITE	WOOD	HINGES, LEVER HARDWARE, PRIVACY LOCKSET
④	1	1'-6" x 6'-8"	MASONITE SOLID CORE 6-PANEL COMPOSITE	WOOD	HINGES, LEVER HARDWARE, PASSAGE LOCKSET



SECOND FLOOR PLAN
SCALE 1/4" = 1'-0"

WINDOW SCHEDULE				
NO.	QUANTITY	UNIT DIMENSION	TYPE	FRAME
A	10	2'-5 5/8" x 4'-8 7/8"	ANDERSON TW2446 400 SERIES DOUBLE HUNG	VINYL
C	1	1'-9 5/8" x 3'-7/8"	ANDERSON TW18210 400 SERIES DOUBLE HUNG	VINYL



THIRD FLOOR PLAN
SCALE 1/4" = 1'-0"

- PLAN SUBMISSION NOTES**
- THIS PLAN IS FOR CITY OF AUGUSTA BUILDING CODE, LIFE SAFETY CODE, ADA, FIRE MARSHAL AND OCCUPANCY APPROVAL ONLY.
 - PLAN BASED ON PLAN PROVIDED BY THE OWNER.
 - THE PLUMBING, ELECTRICAL, AND MECHANICAL DESIGN OF THE BUILDING IS BY THE OWNER.
 - IBC 2009 USE GROUP: RESIDENTIAL (R)
 - 2009 NFPA LIFE SAFETY OCCUPANCY: RESIDENTIAL
 - CONSTRUCTION TYPE: TYPE V B (UNPROTECTED)

LEGEND

	EXISTING WALL
	PROPOSED WALL
	1-HR. FIRE RATED WALL
	EXIT SIGN
	EMERGENCY LIGHTING
	SMOKE DETECTOR
	FIRE ALARM PULL HANDLE
	HEAT DETECTOR
	HORN/STROBE LIGHT
	FIRE EXTINGUISHER
	BRAILLE SIGNAGE

ADVANCE COPY

E.S. COFFIN
ENGINEERING & SURVEYING
432 Camp Road, P.O. Box 4687, Augusta, Maine 04330
Ph: (207) 623-9475 Fax: (207) 623-0016 Toll Free 1-800-244-9475

NO.	DATE	REVISIONS

CLIENT & PROJECT: 155 HOSPITAL STREET ADDITION BREAD OF LIFE MINISTRIES
LOCATION: 155 HOSPITAL STREET
TOWN: AUGUSTA COUNTY: KENNEBEC STATE: MAINE

PROJ. NO. 2017-131

SHEET TITLE: SECOND & THIRD FLOOR PLANS
SCALE: AS SHOWN
DATE: DECEMBER 7, 2017
DRAWN BY: CSC
CHECKED BY: BEM