

DOOR SCHEDULE					
NO.	QUANTITY	SIZE	TYPE	FRAME	REMARKS
①	3	3'-0" x 6'-8"	MASONITE SOLID CORE 6-PANEL COMPOSITE	WOOD	HINGES, LEVER HARDWARE, PRIVACY LOCKSET
②	2	2'-6" x 6'-8"	MASONITE SOLID CORE 6-PANEL COMPOSITE BI-FOLD	WOOD	HINGES, TRACK
③	1	3'-0" x 6'-8"	MASONITE SOLID CORE 6-PANEL COMPOSITE	WOOD	HINGES, LEVER HARDWARE, PRIVACY LOCKSET

WINDOW SCHEDULE				
NO.	QUANTITY	UNIT DIMENSION	TYPE	FRAME
A	10	2'-5 5/8" x 4'-8 7/8"	ANDERSON TW2446 400 SERIES DOUBLE HUNG	VINYL
B	1	3'-0" x 4'-0"	INTERIOR CASEMENT	VINYL
C	1	1'-9 5/8" x 3'-7/8"	ANDERSON TW18210 400 SERIES DOUBLE HUNG	VINYL

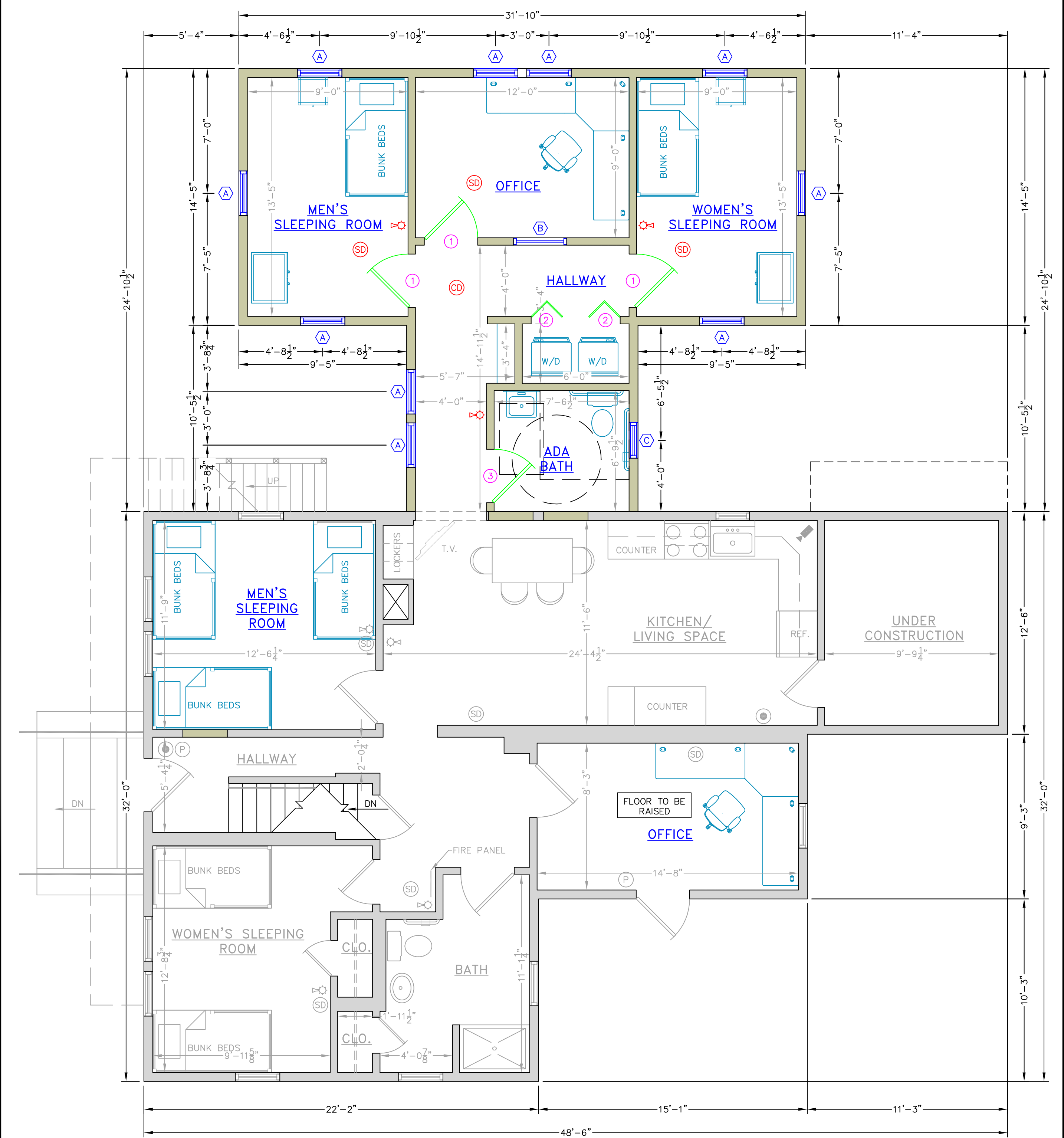
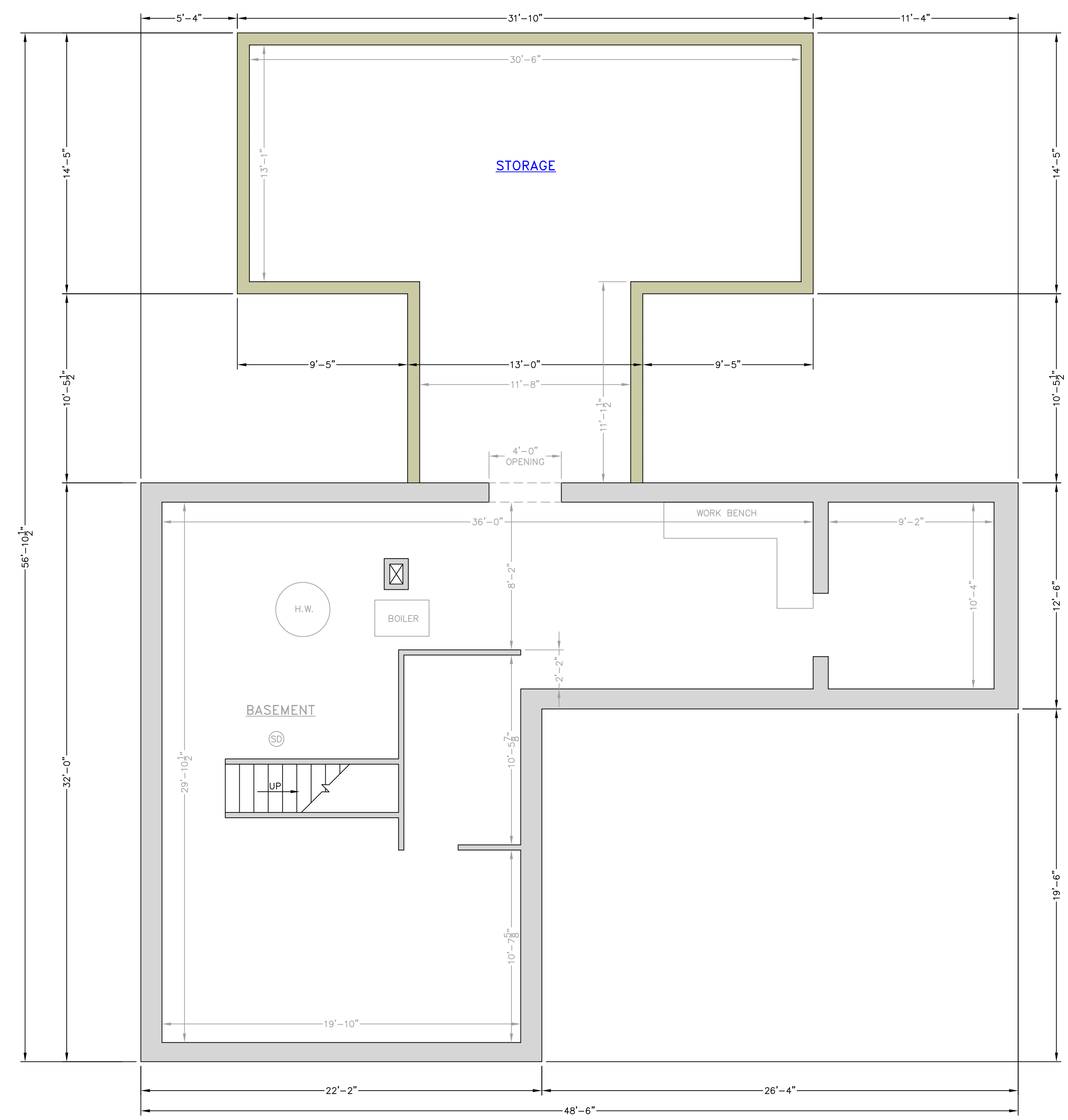
- PLAN SUBMISSION NOTES**
- THIS PLAN IS FOR CITY OF AUGUSTA BUILDING CODE, LIFE SAFETY CODE, ADA, FIRE MARSHAL AND OCCUPANCY APPROVAL ONLY.
  - PLAN BASED ON PLAN PROVIDED BY THE OWNER.
  - THE PLUMBING, ELECTRICAL, AND MECHANICAL DESIGN OF THE BUILDING IS BY THE OWNER.
  - IBC 2009 USE GROUP: RESIDENTIAL (R)
  - 2009 NFPA LIFE SAFETY OCCUPANCY: RESIDENTIAL
  - CONSTRUCTION TYPE: TYPE V B (UNPROTECTED)

**LEGEND**

	EXISTING WALL
	PROPOSED WALL
	1-HR. FIRE RATED WALL
	EXIT SIGN
	EMERGENCY LIGHTING
	SMOKE DETECTOR
	FIRE ALARM PULL HANDLE
	HEAT DETECTOR
	HORN/STROBE LIGHT
	FIRE EXTINGUISHER
	BRAILLE SIGNAGE

**ADVANCE COPY**

**ENGINEERING SURVEYING**  
**E.S. COFFIN**  
 E.S. COFFIN ENGINEERING & SURVEYING, INC.  
 432 Comy Road, P.O. Box 4687 Augusta, Maine 04330  
 Ph. (207) 623-9475 Fax (207) 623-0016 Toll Free 1-800-244-9475



NO.	DATE	REVISIONS

CLIENT & PROJECT: **155 HOSPITAL STREET ADDITION**  
**BREAD OF LIFE MINISTRIES**

LOCATION: 155 HOSPITAL STREET  
 TOWN: AUGUSTA COUNTY: KENNEBEC STATE: MAINE

SCALE: AS SHOWN  
 DATE: DECEMBER 7, 2017  
 DRAWN BY: CSC  
 CHECKED BY: BEM

SHEET TITLE: **BASEMENT & FIRST FLOOR PLANS**

PROJ. NO. 2017-131